



Footnotes



Portland Country Dance Community • May-June 2018

Northwest Passage Dance and Music Camp 2018

By Rich Scher

It's springtime, "when birds do sing, hey ding a ding ding" to remind us that [Northwest Passage 2018](#), PCDC's all English country dance and music camp, will soon arrive on Labor Day weekend, August 31 to September 3. Camp will once again be held at the Kiwanis Camp on the beautiful slopes of Mt. Hood, featuring the elegance and energy of our bands **Persons of Quality** (Jon Berger, Rebecca King, Jim Oakden), **Fine Companions** (Betsy Branch, Bill Tomczak, Erik Weberg, Mark Douglass) and the masterful dance leading of **Kalia Kliban** and **David Millstone**.

PCDC invites dancers of all stripes—from the courtly to the raucous, from the virtuoso to the newcomer—to experience the spirit and grace of English country dancing in the rarified air of world-class musicianship and dance leading.

We continue our commitment to expanding dance horizons by annually alternating between English and American dance genres. This year's all English country dance and music program offers a wide range of high quality workshops in instrumental music, singing and calling. ECD newcomers can get more familiar with this dance form in a relaxed and friendly setting most Friday nights in Portland at the Burlingame Water Tower Dance Hall.

Beth Gibans will be back with her famous cuisine. **John Oorthuys** will provide his excellent sound reinforcement, and campers will enjoy the spacious dance floor and rustic but comfortable accommodations of the Kiwanis Camp.

Flyers are available at local dances and have been emailed to PCDC members and past Northwest Passage attendees. Registration is online only, available on a first-come, first-served basis, and opens in May. Go to www.NWPassageDanceCamp.org for more information and to register. Partial grants are available for PCDC members at www.portlandcountrydance.org/pcdc-grants.

In this issue we highlight our band Fine Companions and dance leader David Millstone.

Fine Companions, a group of highly accomplished Northwest musicians, features dreamy textures, rich harmonies and rhythmic excitement.

Betsy Branch has been a mainstay of the Portland, Oregon dance community for many years. Her exuberant dance fiddling has delighted dancers on both coasts and her warmth and engaging smile extend beyond the stage, drawing in dancers and listeners alike. She is the Associate Music Director of the Portland Revels, and their

house fiddler. Betsy plays for English and Irish dancing, and in several contra dance bands. Her primary passion is teaching and mentoring fiddlers and dance musicians in workshops and private lessons.



Bill Tomczak, who plays clarinet, saxophone and percussion, discovered the world of International Folk Dancing in 1979 and has been playing for folk dance of one kind or another ever since, excelling in such genres as Balkan, Klezmer, Greek, contra dance and jazz. He has developed a reputation as a tasteful and innovative improviser, seamlessly blending a wide variety of instrumental styles and exploring new directions for contra dance clarinet and saxophone playing. Bill also plays with The Latter Day Lizards and Campaign for Reel Time. He has recorded with The Latter Day Lizards, BLT, Wild Asparagus and Yankee Ingenuity.

Erik Weberg plays flutes, harmonicas and bombardes (yes, plural). He is a regular musician at English country dances in Portland, and he organizes and plays for the popular monthly contra dance with the band Joyride. He is also an English and contra dance caller, performing at festivals and weekends around the country, and was the caller for the 2015 Portland ECD Ball. Erik is also co-director of the Portland Megaband and co-programmer of the Northwest Passage Dance and Music Weekend.

Pianist **Mark Douglass** joins Fine Companions for NWP 2018. Mark infuses his piano background in gospel, swing, jazz and blues into his English country and contra dance stylings. He plays with Campaign for Reel Time, was a member of Wild Hair and can also be heard backing up the fiddle duo Night Owl or enjoying onstage time with wife and music partner Betsy Branch.



David Millstone, from New Hampshire, is one of the nation's leading traditional dance experts and has been calling English and

(continued on next page)

Northwest Passage *(continued from page one)*

American traditional dances for more than thirty years throughout the United States, Canada and Europe. He is known for his clear and supportive teaching style, the breadth of his repertoire, his sense of humor and his ability to choose dances that offer the right level of challenge for all audiences. David is also a dance historian, author and videographer and is the current president of the Country Dance & Song Society.

[Rich is a member of PCDC's Northwest Passage Committee.]

The Perfect Dance Shoes

By Lindsey Grayzel

It's almost time for Raindance! If you're like me, you look forward to Raindance all year long. Great musicians and a whole hall of fabulous dancers keep me

on the dance floor for many long hours.

The only thing that eventually brings me to sit out a dance is my poor, tired feet.

As every dancer knows, happy feet make for a happy dancer and so the quest for the perfect pair of dance shoes is never-ending. When I began

dancing it didn't take long to realize that a

good swing was dependent upon having just the right balance of slip and grip in my footwear. Too much grip made it impossible to achieve that dreamlike glide, and too much slip sent me sliding out of control. After trying all the shoes in my collection and finding them lacking, I then tried going barefoot (ouch...blisters) and in stocking feet (WAY too much slip!) Everyone told me the solution was a decent pair of real dance shoes, and eventually my stubborn and frugal nature gave in to the desire for the perfect swing.

My first pair of dance shoes were darn cute. They had a small and broad heel that seemed downright sensible while the fabric sported iridescent polka dots. Most importantly, the suede sole had the perfect balance of grip and slip to achieve that dreamy swing without sending me flailing out of control. But those cute shoes had absolutely no cushion to them, and more than an hour of dancing in them left my feet howling in pain. I returned to the dance shoe store many times, and over time my list of must-haves kept growing: suede sole, wide toe box, no heel, cushion, not too spendy and....could they be at least just a little bit attractive? Or, at least innocuous? No. Apparently this combination was simply too much to ask for. After many failures, I finally figured out that it was possible to get exactly the dance shoe I wanted by finding my perfect pair of shoes and turning them into dance shoes by gluing suede onto the soles myself. Eureka! It's an easy little project and I've written up this guide so that you too can feel empowered to dance the night away in cute, comfortable shoes that give you just the right amount of glide.

1. Find the perfect shoe, whatever that is for you. It's helpful if the sole is fairly flat and smooth, which will make it easier for the suede to adhere.
2. Go to a leather store and buy yourself some suede. I went to Oregon Leather Company in downtown Portland



on 2nd Ave. The people who work there are incredibly knowledgeable and will not only find you a nice remnant of suede that will work well as dance shoes, but they will tell you which side of the material should be adhered to the sole of your shoes. I highly recommend using a piece of masking tape to mark this clearly for future reference.

3. Trace the sole of your shoe onto the suede and cut it out. Spend the time to trim the suede so it matches perfectly. It's better to err on the side of having the material a little too small than having extra material spilling over the edge that can get caught and trip you.
4. Glue on the suede with Shoe Goo, spreading a thin coat that completely covers the surface area of the shoe. Take some time with a sturdy tool such as a wooden ruler to press and smooth the suede onto the shoe. Let this dry for a minimum of 24 hours, 48 is better.
5. Trim off any excess suede to be sure that there are no little edges that might get caught while you're dancing.
6. Dance the night away! Providing you don't wear them outside or get them wet, my experience is that the shoe will wear out before the suede sole does.

[Lindsey is a member of PCDC's Contra Committee.]

Editor's Note: Also available for your DIY dance shoe creations are sheets of suede with industrial strength self-adhesive backing (made by soles2dance) and stretchy half-socks that fit over your shoes (made by thedancesocks). In a pinch you can raid your own odd sock collection and pull one over your shoe, but...that will cover up the iridescent polka dots.



PCDC Tune Session

Learn a tune (or 3)

w/ George Penk

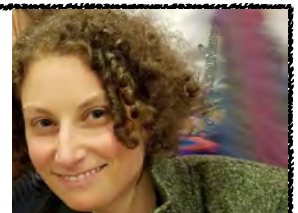
May 10, 7-9 pm

Cost: \$10 for members/\$15 non-members

Info: Etienne at [climb2ski at gmail dot com](mailto:climb2ski@gmail.com)

Cascade Contras Dance Weekend

Nov. 9-11



Wild Asparagus and Buddy System
George Marshall and Lindsey Dono



Amazing food! No gender balancing!
Late night techno! All-inclusive camp
in a beautiful wooded setting. Joy
and fun and rapture too!!

* * *

Registration opens May 1st. Sign up at
www.eugenefolklore.org/cascadecontras

PCDC Board Meeting Minutes

Submitted by Mike Voss

March 20, 2018. Present: Christine Appleberry, Ric Goldman, Rich Goss, Jaydra Perfetti, Sue Songer, Mike Voss.

Treasurer: 1099 forms have been mailed. Contra dance sheets (a form filled out at each dance noting income, expenses and other event data) need to be processed in a more timely fashion. PCDC has hired John Dierdorff, a CPA, for help with taxes and other financial forms such as the 990 and the CT12. He will be paid \$1100/year and will be available to answer questions anytime during the year. Most of the committees are now using QuickBooks; the Contra Committee is still transitioning.

There was a discussion about moving PCDC's bank account. Ric will work with Jaydra to investigate a move.

There was a discussion of the evolution of the PCDC Treasurer position and the fact that PCDC's financial infrastructure has not kept pace with the growth of the organization. We need board policies on handling financial issues like tracking financials and generating an annual budget. Jaydra will generate an updated job description for the treasurer position.

We need to revisit the grants program: should we limit the number of grants per year? The total amount? A limit of \$2500 to be awarded per year was approved. We also need to generate "institutional memory" which would include setting up an electronic repository for storing our documents and organizational info. Ric agreed to look into setting up a Dropbox account for this purpose.

A financial policy is needed for the tune sessions. Should we track or not track? Because the sessions serve to implement PCDC's mission statement, the program needs to be tracked to verify that this is happening. We could set up a separate fund as for grants and allocate a designated amount annually.

Fulton: Christine reported on the city's budget process. Commissioner Dan Saltzman requested a budget that would not involve cutting the four community centers. We need to develop talking points for the budget meetings as speaking time is limited and there aren't many slots. Discussion of possible speakers followed. Other options: financial partnership with city? Join forces with adjacent community gardens people? Christine will pursue these options as well as checking on the historical significance of the Fulton building and seeking support from the organizers of PCDC's family dance.

Family Dance: It was decided to track the family dances separately and monitor them more closely.

Chair: The Hillsboro contra dance was granted \$300. It was recommended that they suspend operations in July and August. We will provide them with a dance sheet and ask them to submit it to us monthly, after each dance.

There was a discussion of offensive comments made by a dancer to another dancer at a recent event.

ECD: Nan Evans will be the caller for the next English Country Ball; music by Fine Companions.

Contra Committee: The Megaband dance was very successful and the sliding scale admission worked well. Jenine Moscové is working on compiling all of the revenue and expenses for the board. We will not be directly counting t-shirts towards revenue, or pizza and parking

passes towards expenses this year, but they will be factored into the report once it is finished. We will discuss whether to continue paying for the Megaband afterparty at the next board meeting. PSU is confirmed for next year.

The Free Raisins have been contacted to see if they are available for the annual New Year's contra dance. Countercurrent + 1 is the backup and potential second band for the evening. Booking was a little slow this year due to the change of hands on the committee, but folks all feel good about the choices. No decision on callers yet.

Changes on the Contra Committee: request to approve Ann Nokes to be on the committee. Beth Hansen may be a candidate for the publicity subcommittee. Ann will take on calendar upkeep and/or Fulton rep. Current members are: Ann Nokes (pending board approval), Marianne O'Doherty (sec'y), Lindsey Grayzel (Footnotes submissions), William Watson (chair), Noah Grunzweig (board rep, publicity), Brian Woodward (volunteer coordinator), Jenine Moscové (dance box manager).

Raindance: Camp is full with a waitlist.

Grants: Two \$150 grants were approved.

New Business: The PCDC picnic is scheduled for 6/30.

[Next PCDC Board meetings: May 15, June 19.]

Upcoming Out-of-Town Events

Jul. 1-6 BACDS' American Week Dance & Music Week in La Honda, CA. Contra dancing, workshops galore, jamming, arts & crafts, and yes, yoga. Info: www.bacds.org

Aug. 3-5 Camp Damp in Juneau, AK. Contra dance camp featuring our own Cascade Crossing w/ caller Frannie Marr. Info: www.juneaucontras.org

Aug. 3-6 Orcas Summer Camp on Orcas Island, WA. DIY contra dance & music camp with a lake. Fine dining! Info: www.orcassummercamp.org

Aug. 10-12 Balance the Bay in S.F., CA. Urban contra dance weekend. Info: www.bacds.org

Sept. 21-23 Chehalis Dance Camp in Mission, B.C. Friendly contra dance camp in a natural setting. Info: www.vcn.bc.ca/vcountry

SPOTLIGHT ON...THE HAT BAND

The Hat Band is Carol Ann Wheeler on fiddle, Jon Neff on guitar and Syd Newell on fiddle. This is a band with a unique sound! Their repertoire comprises a wide variety of styles and genres folded into contra format: reels, jigs, polkas, marches, Klezmer, pop tunes, even 40's swing. And they have twin fiddles! So while one fiddle leads the melody the other fiddle can interweave rich harmonies and compelling rhythms into the mix. All three band members are classically trained musicians and all three are members of the Portland Megaband. Carol Ann played classical violin for 20 years before switching to fiddle. She has published instructional fiddle materials and was half of the duo Pickin' & Fiddlin'. Syd is a retired chemistry professor and has been playing fiddle for contra dancers since 2006. Jon has a deep musical background and provides the band's driving rhythm. Besides the guitar, he plays a multitude of stringed instruments including mandolin and bass.

Catch The Hat Band at the PCDC Contra Dance on Saturday, May 12 with caller Noah Grunzweig. -Editor



Calendar • May-June 2018



Note: Unless otherwise noted all contra dances begin at 7:30 pm with a 30 minute teaching session, and end at 11. All English country dances begin at 7:30 pm and end at 10:30. All dances feature live music.

May

| Date | Dance | Caller | Music |
|-----------|--|---|---|
| 2nd Wed. | First Wednesday Contra at PH, 7:30-10 pm | Michael Karcher | Joyride |
| 4th Fri. | PCDC English Country Dance at BWT | David Macemon | Community Band w/ Lisa Scott, Betsy Branch, Laura Kuhlman |
| 5th Sat. | First Saturday Contra Dance at FCC | William Watson | UnLeashed! |
| 11th Fri. | PCDC English Country Dance at BWT | Cynthia Stenger | Rich Scher, Sarah Goss, Jon Neff |
| 11th Fri. | Contra in the 'Couve at HDG, 8-10:30 pm | Abigail Hobart | Thyme Travelers |
| 12th Sat. | PCDC Contra Dance at FCC | Noah Grunzweig | The Hat Band |
| 13th Sun. | PCDC Advanced ECD at RS, 3-5 pm | David Macemon | Bill Tomczak, Erik Weberg, Leslie Hirsch |
| 18th Fri. | PCDC English Country Dance at BWT | Ric Goldman | Heather Pinney, George Penk, Laura Kuhlman |
| 18th Fri. | Hillsboro Contra Dance at TLC, 7-10 pm | Rich Goss | Stepwise |
| 19th Sat. | Third Saturday Contra Dance at FCC | Rich Goss | The BFD (Betsy B, Fran & Dan) |
| 25th Fri. | PCDC English Country Dance at BWT | Cynthia Stenger | Carl Thor, Sean Nolan, Leslie Hirsch |
| 26th Sat. | PCDC Contra Dance at FCC | <i>No PCDC Contra Dance—join us at the NW Folklife Festival in Seattle.</i> | |

June

| Date | Dance | Caller | Music |
|-----------|--|-----------------------|--|
| 1st Fri. | PCDC English Country Dance at BWT | David Macemon | Sue Songer, Lori Shaffer, David Kaynor |
| 2nd Sat. | First Saturday Contra at FCC | David Kaynor | The Stage Crew |
| 6th Wed. | First Wednesday Contra at PH, 7:30-10 pm | Susan Petrick | Joyride |
| 8th Fri. | PCDC English Country Dance at BWT | Nan Evans | Sue Songer, Laura Kuhlman, Fred Nussbaum |
| 8th Fri. | Contra in the 'Couve at HDG, 8-10:30 | Woody Lane | The Hat Band |
| 9th Sat. | PCDC Contra Dance at FCC | Tarka Ayres | Cascade Crossing |
| 10th Sun. | PCDC Advanced ECD at RS, 3-5 pm | Erik Weberg | Bill Tomczak, Betsy Branch, Lisa Scott, Erik W |
| 15th Fri. | PCDC English Country Dance at BWT | Erik Weberg | Fine Companions |
| 15th Fri. | Hillsboro Open Mike Contra at TLC, 7-10 pm | Tarka Ayres et al. | Open band |
| 16th Sat. | Third Saturday Contra Dance at FCC | Susan Michaels | Jigsaw |
| 22nd Fri. | PCDC English Country Dance at BWT | David Macemon | Lisa Scott, Ellen Hansen, Leslie Hirsch |
| 23rd Sat. | PCDC Contra Dance at FCC | Lindsey Dono | Joe Root, Betsy B, Bill Tomczak, Dan Compton |
| 29th Fri. | PCDC English Country Dance at BWT | Laura Hatch | Jon Neff, TBA |
| 30th Sat. | PCDC 5th Sat. Open Mike Contra at FCC | Noah Grunzweig et al. | Open band w/ Victor Fiore & Jon Neff |



PCDC Annual General Meeting: Sat. June 9 at the break during the contra dance at Fulton. Vote in the new board, thank our volunteers.

Venues

| | |
|--------------|---|
| BWT | Burlingame Water Tower Dance Hall, 8936 SW 17th Ave, Portland • <i>No street shoes permitted on the dance floor.</i> |
| FCC | Fulton Community Center, 68 SW Miles St. (off Barbur Blvd.), Portland • <i>Dance shoes recommended.</i> |
| HDG | Hazel Dell Grange, 7509 NE Hazel Dell Ave, Vancouver, WA |
| NH | Norse Hall, 111 NE 11th Ave, Portland |
| PH | Polish Hall, 3832 N. Interstate Ave, Portland |
| RS | A Renaissance School, 0234 SW Bancroft St. (off SW Corbett Ave), Portland • <i>No street shoes permitted inside the building.</i> |
| St. B | St. Barnabus Episcopal Church, 2201 SW Vermont St., Portland, OR |
| TLC | Trinity Lutheran Church, 2194 SE Minter Bridge Rd., Hillsboro, OR |
| VB | Village Ballroom, 700 NE Dekum St., Portland |
| WHC | Waverly Heights Congregational Church, 3300 SE Woodward St., Portland |

Regular PCDC Dances

Unless otherwise stated, all PCDC dances are open to everyone—experienced or not, with or without a partner—and feature live music. All dances are taught. PCDC encourages sit-in musicians (unmiked) at regular dances at the discretion of the hired band and caller.

Regular PCDC contra dances cost \$9 for non-members, \$7 for members and \$6 for seniors & students; English dances cost \$1 more in each category. *No scented products at dances!* PCDC Friday English Country Dance. This traditional form of dance has been around since the 1600's and it's still thriving! The tunes are hauntingly beautiful and the dances are graceful, elegant, and best of all, fun and easy to learn! Tea and cookies at the break. BWT, 7:30-10:30 pm. PCDC Second Saturday Family Dance. Fun dancing for kids and families, October-April at FCC, 4:30-6:30 pm. Cost:



\$6/adults; \$5/kids; \$20/family max. For more information contact wahedim at gmail dot com.

PCDC Second Saturday Contra Dance. The longest continuously running contra dance in the state. Anyone can learn to contra dance! FCC, 8-11 pm, beginners' lesson at 7:30. \$1 off admission if you arrive before 7:30.

PCDC Fourth Saturday Contra Dance. FCC, 8-11 pm, beginners' lesson at 7:30. \$1 off before 7:30.

PCDC Fifth Saturday Contra Dance. An open-mike session for callers and musicians. FCC, 8-11 pm, lesson at 7:30 pm. \$1 off before 7:30. Arrive early to sign up for a calling slot and/or to set up your instrument on stage.

PCDC Second Sunday Advanced ECD. More challenging dances, with focus on style & technique for experienced dancers. Sept-June at RS, 3-5 pm. Cost: \$10.

Other Portland Area Contra Dances

Joyride First Wed. Contra Dance is organized by the band *Joyride* with guest callers. Sept.-June at PH, 7:30-10 pm. \$7/\$6 students w/ ID.

Contra in the 'Couve! is on 2nd Fridays, 8-10:30 pm at HDG in Vancouver, WA. Lesson at 7:30. Cost: \$7/\$5 kids & seniors.

Hillsboro Contra Dance is on 3rd Fridays at TLC, 7:30-10 pm, lesson at 7. Cost: \$8/\$7 PCDC members/\$6 seniors/\$5 students/under 12 free/\$20 family max.

First Saturday Contra Dance. The *UnLeashed!* and *Stage Crew* bands alternate months with guest callers. FCC, 8-11 pm with a beginners' lesson at 7:30. Cost: \$8/\$6 students; \$1 off coupon for a future First Saturday dance if you arrive prior to 7:30.

Third Saturday Contra Dance. The bands *Jigsaw* and *The BFD* alternate months with guest callers. FCC, 8-11 pm; lesson at 7:30. \$8/\$6 students.

More Portland Dances

Norske Runddansere: Scandinavian Folk Dancing (including the Hambo) to recorded music. Mondays at Nordia House, 7-10 pm, \$5, all welcome.

Monday Waltz: waltz and other couples dances to recorded music at WHC,

8:30-10:30 pm, lesson at 8. Cost: \$8. Info at: www.lenorasballroom.com.

Every Wednesday Square Dance at the VB with live music & caller, 7-10 pm, \$7.

Third Friday Céilí: Traditional Irish dancing w/ live music at St. B, 8-11 pm,

Out of Town Dances

Ashland: 3rd Saturdays, Sept.-May at The Grove in Ashland. Info at: www.socontra.org

Bend: 2nd Saturdays, Oct.-April at Pine Forest Grange. Info at: www.bendcontradance.org

Coos Bay: 1st & 5th Sat. Oct-May at Bay Area Senior Center, 7 pm. Info at: www.southcoastfolk.society.com

Corvallis: 1st & 3rd Saturdays, Sept.-June at Gattton Hall, 8-11 pm. Info at: www.corvallisfolklore.org

Eugene: 2nd & 4th Saturdays, Sept.-June at Dunn School, 7:30-10:30 pm. Info at: www.eugenefolklore.org

Hood River: 2nd Saturdays, Oct.-June at Rockford Grange, 7 pm; family friendly. For more info: www.communitygorge.net

Olympia: 1st, 2nd, 4th Saturdays, 7:30-10:30 pm, at the South Bay Grange in Lacey, WA. Info at: www.olympiadance.org

Seattle: English country on Fri. & Sun.; contra on Thurs., Fri., Sat. Info at: www.seattledance.org

Tacoma: 3rd Saturdays, 8-11 pm, at Christ Church Wells Hall. Info at: www.tacomacontradance.org

www.PortlandCountryDance.org



Portland Country
Dance Community

lesson at 7:45. Cost: \$12/\$8 students & members. www.portlandceilisociety.org

Kyklos International Folk Dance at Reed College, Sun. 7-9:45 pm. European, Israeli and American line, set and couple dances. Newcomers welcome, \$2.

Portland Country Dance Community

P.O. Box 2189

Portland, OR 97208-2189

RETURN SERVICE REQUESTED

PLEASE let us know immediately if your address changes. We get charged 59¢ for each newsletter that is returned. And worse yet, you won't get your newsletter. Please provide your old and new address to: Jon at JonNeff dot net, or call 503-893-2102. You can also opt to receive your newsletter electronically.

This newsletter, *Footnotes*, is published every other month starting in January. The information provided herein is as accurate as we can make it, but late changes and/or cancellations may not be reflected. If you have a dance-related announcement, event, article or photo for the newsletter, please contact the editor at Laureland3 at yahoo dot com. We encourage the submission of letters and articles that might be of interest to the community. All such materials become the property of *Footnotes* upon publication and may be edited. The deadline for submissions for the next issue is the 12th of the previous month.

Portland Country Dance Community is a consortium of dancers, musicians and callers promoting country dance and music traditions through regular dances, workshops and other events. Everyone is welcome. Our interests include American, English, Scandinavian, Celtic, and related traditions, expressed through live performance and participation. With this

newsletter we hope to exchange information and share concerns about traditional music and dance.

Footnotes is distributed to members of PCDC and to other folk organizations. **Membership** is \$15 per year for individuals, \$12 for students and seniors (65+), \$25 for households and \$20 for senior households. Membership provides a \$2 discount at all regular PCDC dances, and a subscription to the newsletter. Donations in excess of membership fees are tax deductible. Membership correspondence may be sent to: PCDC, 3600 SW Beaverton Hillsdale Hwy #10, Portland, OR 97221. PCDC is an educational non-profit corporation and an affiliate of the Country Dance and Song Society (CDSS), a national organization whose address is 132 Main St., PO Box 338, Haydenville, MA 01039-0338.

The **PCDC Board** is an elected body of volunteers from the community. Board meetings are held approximately every six weeks. Community members are welcome to attend. Help, ideas and feedback from the community, in whatever form, is necessary to make PCDC events happen. Your contributions of time and support are appreciated. Contact any board member for further information via email or: PO Box 2189, Portland, OR 97208-2189.

Current PCDC Board members:

Christine Appleberry (Raindance Rep)
ceappleberry at yahoo
Ric Goldman (English Committee Rep)
letsdance at rgoldman dot org
Rich Goss (Chair, Family Dance Rep)
rich at richgoss dot com
Noah Grunzweig (Contra Committee Rep)
grunzwei at gmail
Jaydra Perfetti (Treasurer)
jaydralin at gmail
Sue Songer (Northwest Passage Rep)
songer at portcoll dot com
Mike Voss (Secretary)
williams5key at mac dot com

Other major PCDC volunteers:

Contra dance booking: Gordy Euler
euleromi at pacifier dot com
Contra Committee Chair: William Watson
williamcallscontras at gmail
English Committee Chair: Susan Gere
susangere at gmail
English music booking: Laura Kuhlman
shawm1550 at gmail
English caller booking: Erik Weberg
erik at erikweberg dot com
Family dances: Mastura Wahedi
wahedim at gmail dot com
Footnotes editor: Laurel Thomas
laureland3 at yahoo
NWP Committee Chair: Ethel Gullette
effieg47 at gmail
Raindance Committee Chair: Kim Appleberry
pdxapple at comcast dot net